

ACCURIAN RS PROGRAMME

AERODYNAMICS

ACCESSOIRES

QUADRO EXHAUST SYSTEM

SUSPENSION TECHNOLOGY

ALUMINIUM RIM PROGRAMME

POWER-CONVERTER

CONVERTIBLE SMART TOP



Choose one of the categories in the navigation on the left. Find your content with just one click.

Design programme SLK-Class R172

based on Mercedes-Benz SLK-Class R172

Accurian RS programme SLK R172

Aerodynamics



- | | |
|---|-----------------|
| <p>1 PIECHA ACCURIAN RS front spoiler lip 172-1-100</p> <p>Suitable for standard front bumper (not for AMG styling). With distinctive grille inserts left and right. The design emphasizes the significant harmonic sportiness. As the perfect complement, we recommend a combination with the grill cover.</p> | <p>5</p> |
| <p>2 PIECHA ACCURIAN RS front spoiler lip AMG 172-1-101</p> <p>Suitable for AMG-Styling and AMG 55. The design is specially developed with an optical integrated separate front lip. It makes a very sportive and masculine look. The integration in the original design line is perfect and in a well done harmony. As optional delivery is a separate real carbon cover for the integrated front lip.</p> <p>Real Carbon cover for Accurian RS front lip AMG C172-1-101</p> | <p>6</p> |
| <p>3 PIECHA ACCURIAN RS grill cover (only in combination with the front lip 172-1-100) 172-1-110</p> <p>PIECHA ACCURIAN RS grill cover (specially for standard bumper without front lip) 172-1-111</p> <p>As a complement to the RS front spoiler lip (not for AMG styling). Löschen Together with the grill cover the one-piece wire rack becomes a 3-part rack and puts the LED daytime running lights to his left and right into scene. The design allows the front spoiler appear much sportier and is a perfect combination with our front spoiler lip.</p> | <p>7</p> |
| <p>4 PIECHA ACCURIAN RS side skirt covers for serial side skirts (not for AMG styling)</p> <p>Side skirt cover right side 172-1-201</p> <p>Side skirt cover left side 172-1-202</p> <p>The side skirt covers are glued to the original skirts according to the shape. The reverse of the grille inserts and the distinctive lines give the SLK a strong sporting image.</p> | |
| <p>5 PIECHA ACCURIAN RS rear diffusor small 172-1-300</p> <p>Suitable for standard bumper (not for AMG styling). The small RS rear diffusor is specially designed for our 4-pipe exhaust system. The diffusor is necessary in combination with our 4-pipe exhaust system. The standard bumper has to be reworked.</p> | |
| <p>6 PIECHA ACCURIAN RS rear diffusor (wide version) 172-1-310</p> <p>Suitable for standard bumper (not for AMG styling). The wide RS rear diffusor design is the addition to our side skirt covers and fits perfectly in combination with our 4-pipe exhaust system. The design of the striking diffusor extends to below the subsoil and produces an optimum output. The standard bumper has to be reworked.</p> | |
| <p>7 PIECHA ACCURIAN RS rear diffusor insert for AMG bumper 172-1-320</p> <p>Special exchange insert used for the AMG bumper. The diffusor design is developed specifically for our 4-pipe exhaust system. The design of the striking diffusor extends to below the subsoil and produces an optimum output.</p> <p>A rebuilding is possible at any time.</p> | |

Accurian RS programme SLK R172



Aerodynamics

- 8 PIECHA ACCURIAN RS trunk lid spoiler** 172-1-400
The trunk lid spoiler underlines the width of the roadster, and emphasizes the distinctive sporty line. Suitable for all R172 models. Adhesive mounting.

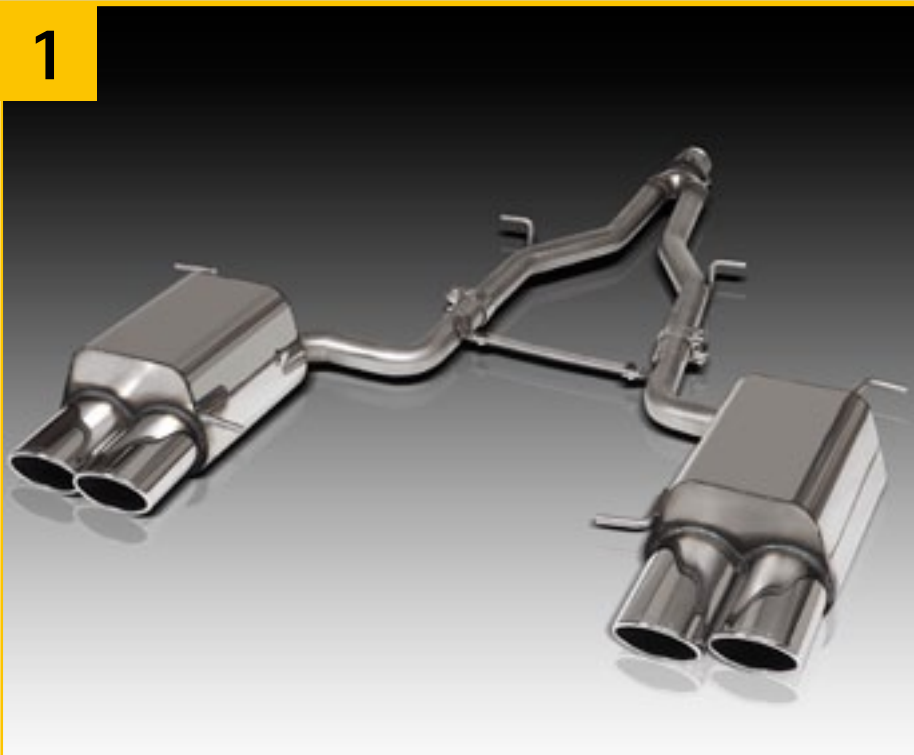
Accessoires

- 9 LED side skirt illumination** 000-5-200
For an additional installation in the side skirts. 8 LED lights (4 per side) with ready-built wiring harness. Suitable for all Mercedes-Benz models.
- 10 PIECHA Real glass wind deflector** including special basic support bar (set) 172-6-500
- 11 Bonnet fins chrome** (6 pcs. set) 172-4-501
- 12 Aluminium door pins** (2 pcs. set, especially suitable for SLK R172) 172-4-500



* Assembly instructions, Technical Control Board certificates respectively EC approval and installation material are included.

Accurian RS programme SLK R172



4-pipe QUADRO stainless steel exhaust mufflers

1 PIECHA QUADRO 4-pipe stainless steel silencer

4 chrome polished oval end tips 115 x 85 mm. EC Type-Approval certificate.

Exhaust cuttings must be reworked. Sporty powerful sound.

For a perfect design we recommend the installation of one of our RS rear diffusers.

PIECHA QUADRO 4-pipe system for SLK 200 + 250

172-2-300

PIECHA QUADRO 4-pipe system for SLK 350

172-2-301

Suspension technology

2 25 mm lowering springs

For SLK with 4-cylinder engine incl. ABE 172-3-800

For SLK with 6-cylinder engine incl. ABE 172-3-801

3 Wheel spacers

24 mm per axle (12 mm per side) 000-3-2-12

30 mm per axle (15 mm per side) 000-3-2-15

40 mm per axle (20 mm per side) 000-3-2-20

Wheel screws M14 x 1.5 x length ball band 1415xx-MB

Wheel screws M14 x 1.5 x length 60° cone 1415xx-60

The wheel screws are not included. The new needful length of the wheel screw and performance calculates from the original length of the wheel screw (measured until the coil) + the thickness of the distance disc + head type.

Ideal combination for 7.5 + 8.5 x 18" AMG wheels front and rear 24 mm spacers with M 14 x 1.5 x 40 mm MB ball band screws.



2



3

* Assembly instructions, Technical Control Board certificates respectively EC approval and installation material are included.

Accurian RS programme SLK R172

Aluminium rim programme



1 PIECHA MP1-MONOBLOCK

High-tech rim in brand new interpreted convex turbine-design.
Developed for maximum wheel size. Delicate and hidden wheel connection zone.
No body work required.

Titan satin matt with polished racks and outline rims.

Front axle 8.5 x 19 offset 30

Rear axle 9.5 x 19 offset 35

Rear axle 10.5 x 19 offset 40

Suitable tires:

Front axle 8.5 x 19 with 225/35 R19 Rear axle 9.5 x 19 with 255/30 R19

Front axle 8.5 x 19 with 235/35 R19 Rear axle 10.5 x 19 with 275/30 R19 *

Front axle 8.5 x 19 with 235/35 R19 Rear axle 10.5 x 19 with 265/30 R19 or 275/ 30 R19 *

MP1-851930-3

MP1-951935-3

MP1-1051940-3



2 PIECHA dp2 Phantom

Single-part rims in multipart appearance with stainless steel panel and deep well.
Optionally in high-gloss silver or silk mat black.

Front axle 8.5 x 19 offset 28 in silver

Rear axle 9.5 x 19 offset 30 in silver

Front axle 8.5 x 19 offset 28 in black

Rear axle 9.5 x 19 offset 30 in black

Suitable tires:

Front axle 8.5 x 19 with 225/35 R19 rear axle 9.5 x 19 with 255/30 R19

DP2-851928-1

DP2-951930-1

DP2-851928-2

DP2-951930-2

* Rework required

* Assembly instructions, Technical Control Board certificates respectively EC approval and installation material are included.

Design programme SLK R172

Power-Converter



1 PIECHA Power-Converter CS RC *

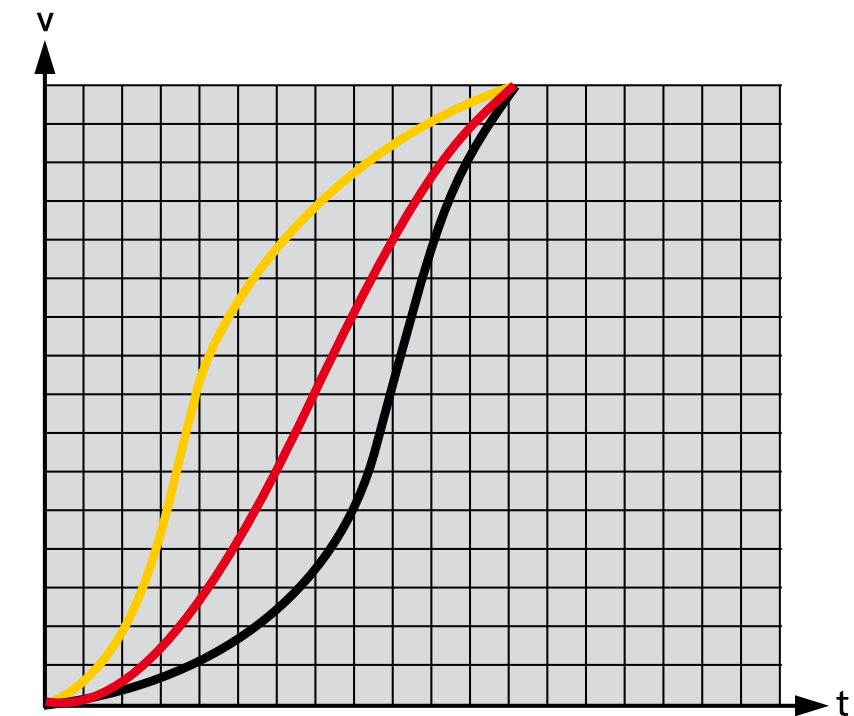
172-7-700

The Power-Converter CS RC is suitable for all transmission versions and diesel vehicles. The module is inserted into the electronic control of the gas pedal. The slow reaction time and the moment of inertia are completely suspended. The acceleration is significantly improved. The response behavior can be adjusted individually by an integrated potentiometer. Moreover a separate switch enables "off" respectively city and sport modes.

The advantages at a glance:

- Significant improvement of the performance potential
- Powerful draft from low revolutions within the whole speed range
- Very fast response behavior
- Significantly better acceleration and more agile driving behavior
- Simple installation through plug and play connection
- Individual adjustment of the response behavior and additionally switchable from the serial- into the city- or sport-mode by a separate switch.
- Via a built-in potentiometer the response behavior will be individually fine tuned.

Also suitable for C-class W204, E-class W212 und W207, GLK, VITO, VIANO, CLS 218, SL 231



— Acceleration without Power-Converter

— Acceleration with Power-Converter in city-mode

— Acceleration with Power-Converter in sport-mode

* Assembly instructions, Technical Control Board certificates respectively EC approval and installation material are included.

Design programme SLK R172

Convertible smart top



1 Comfort-vario-roof-module

172-7-600

The vario-roof-module enables pure driving comfort thanks to the new CAN-Bus technology. The roof can be opened and closed while driving with up to 60 km/h.

The advantages at a glance:

- Simple installation using plug & play wiring harness
- Roof functionality is started by a single tipping onto the roof button.
- The roof button does not have to be held.
- Opening and closing via the serial radio key from a distance of up to 50 m (no infrared remote control needed)
- Deluxe setting enables the starting of the engine via the ignition lock while the canopy top is opening or closing.
- Opening and closing the front side windows
- Acoustic alarm signal when opening or closing the car (optionally adjustable)
- Going Home Setting:
the fog lights can be set to shine for 30 seconds after locking the car.
- Individual module settings and display of all module settings via the instrumental menu
- USB updates via the internet
- LED installation help for error-free connection



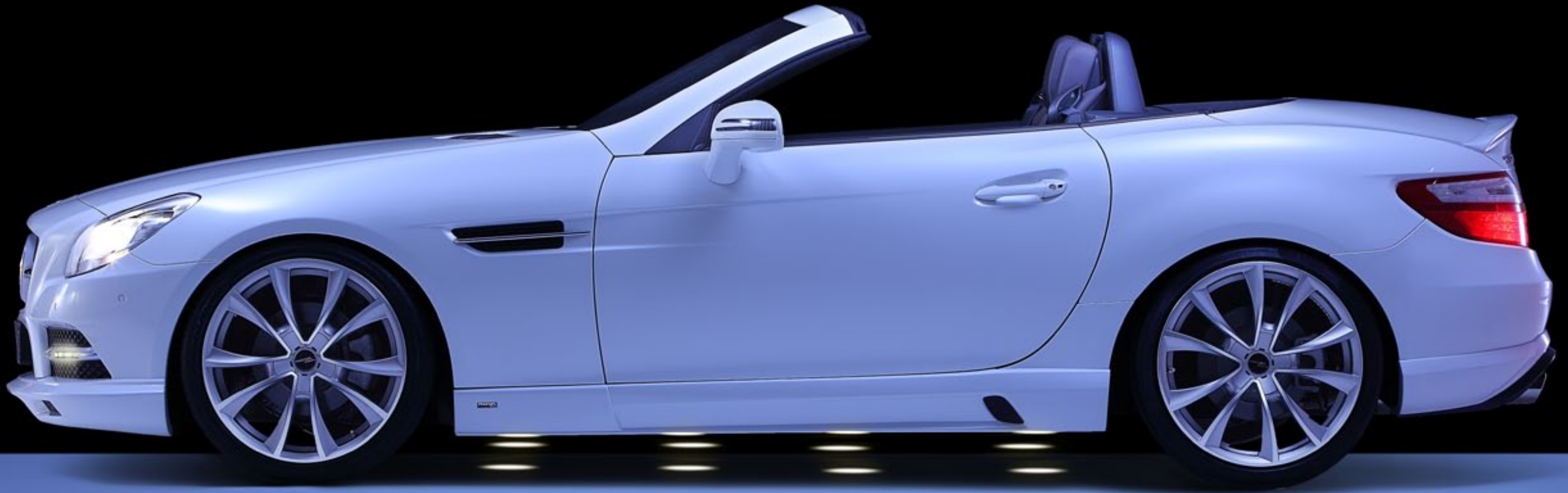
* Assembly instructions, Technical Control Board certificates respectively EC approval and installation material are included.

 back

MENU

お問い合わせ

next 



PIECHA Design on YouTube:



MENU

有限会社ユーロ
〒134-0084
東京都江戸川区東葛西5-6-3
TEL.03-5674-7742

www.euro.ne.jp